

enttech srl

Engineering & Technology

CAADSYSTEM

Ptda. Sol de L'Horta, s/n

12110- L'ALCORA – CASTELLON – SPAIN

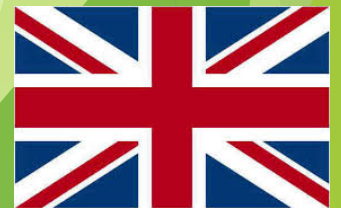
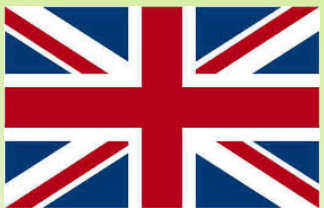
TEL. +34 964 361592 - Móvil +34 600 592469

Entech was founded in 1997 with its Headquarter in Sassuolo (MODENA), where the main Ceramic Cluster in Italy is located and it started to develop its Technology in Raw-Material and Granules process, mainly operating in the Ceramic field .

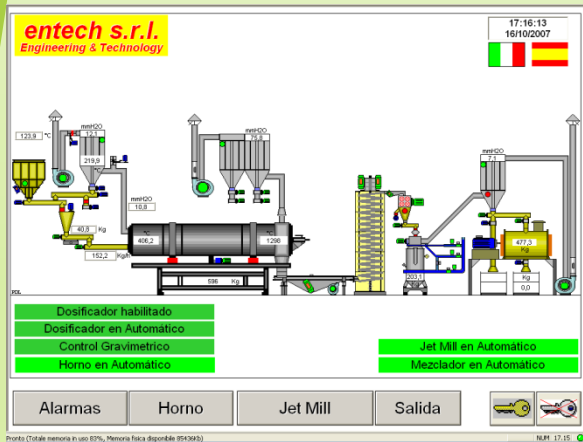
In the years it began expanding its activity in others sectors such as Mining, Cement, Adhesive, Detergents and Glass.

The constant development of the technology, the considerable quality level of the Machinery, the flexibility to the Customer needs, the consolidated experience, the different application and different typology of plants combined with the unceasing research of the process optimization , make ENTECH one of the most expert and competitive Company operating in the market nowadays.

One Team of expert engineers develops the projects , starting from the the Lay-out study and its relative definition ,they analyze the different process steps and then they provide with the installation and the final start-up of one single Machinery or very complex Systems .



DIRECT FLAME STAIN CALCINATION



COLOUR CERAMIC INDUSTRIES

DIRECT FLAME STAIN CALCINATION



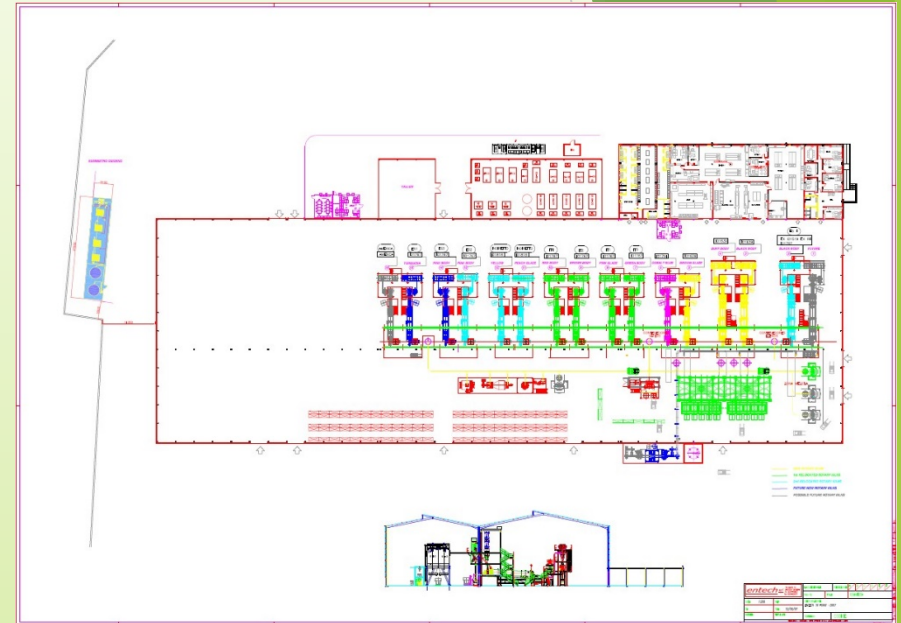
COLOUR CERAMIC INDUSTRIES

DIRECT FLAME STAIN CALCINATION



COLOUR CERAMIC INDUSTRIES

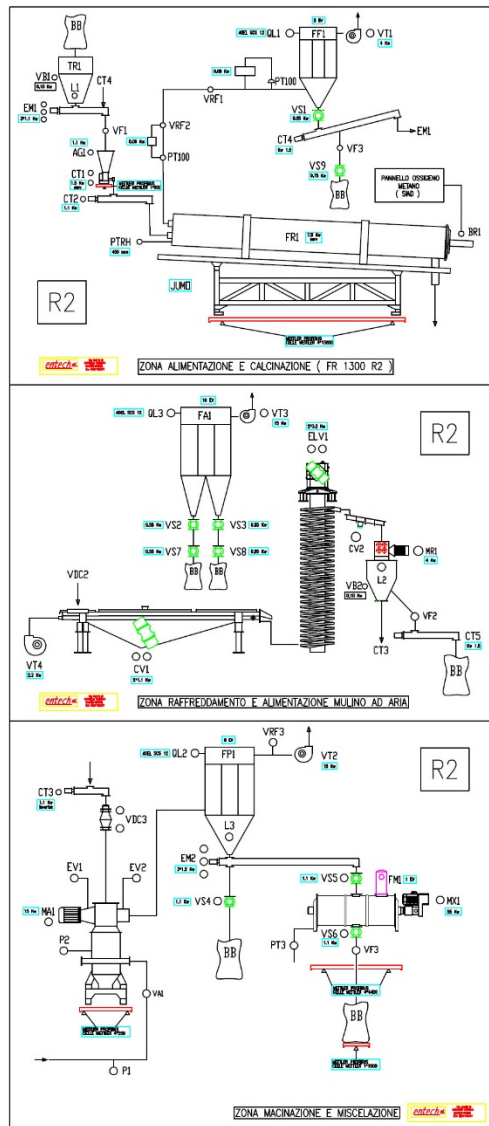
DIRECT FLAME STAIN CALCINATION



[illegible]

COLOUR CERAMIC INDUSTRIES

DIRECT FLAME STAIN CALCINATION



Instalación de Combustión

Caudal CH4	43,2	Nmc/h
Caudal O2	51,2	Nmc/h
Caudal Aire	214,4	Nmc/h
Proporción Real	4,88	
Aria/CH4 Setpoint	5,00	
Proporción Real	1,18	
O2/CH4 Setpoint	1,20	
Frecuencia Ventilador	21,78	Hz
Posición EV CH4	42,8	%
Posición EV O2	30,9	%

Presostatos

Aire de Combustión Min	PSL 400
O2 Min	PSL 100
O2 Max	PSH 100
CH4 Min	PSL 200
Aire Min	PSL 300

Estanqueidad

O2	●
CH4	●

Horno

Real	1329	°C
Temperatura Setpoint	1325	°C
Setpoint Operativo	1325	°C
Rotación Horno	0,60	rpm
Corriente Motor Rotación	8,6	A
Bascula	1564	Kg
Temperatura Entrada	438,2	°C

Enriquecimiento de Oxígeno

Enriquecimiento	Habilitado
Exceso de O2 Real	4,4

Quemador

Dentro	Encendido	●
Potencia Automática		●

Receta en Uso _DATA_73

entech
Recetas
Dosificador
EV CH4

Trainer GAS

Presión CH4	950	mBar
Temperatura CH4	25,7	°C
Presión O2	4912	mBar
Temperatura O2	25,3	°C
Caudal CH4	10,5	Nmc/h
Caudal O2	23,0	Nmc/h
Proporción Reale	2,19	
O2 / CH4 Setpoint	2,20	
Posición EV gas	35	%
Posición EV O2	35	%
Pressostati O2 Min	PSL100	
O2 Max	PSH100	
CH4 Min	PSL200	
Aire Min	PSL300	

Quemador

Encendido	●	
Dentro	Potencialidad Automática	●

Dosificador habilitado

Horno

Reale	1298	°C
Temperatura Setpoint	1300	°C
Setpoint Operativo	1300	°C
Vueltas Rotación	0,60	rpm
Corriente Motor Rotación	9,9	A
Bascula	604	Kg
Temperatura Entrada	401,9	°C

Filtro Horno

Reale	219,9	°C
Temperatura Setpoint	220	°C
Temperatura Chimenea	123,7	°C
Posición Mod. Aire	56,5	°

Depresión

Reale	11,3	mmH2O
Setpoint	8,0	mmH2O

Posición Mod. Depresión

Dapó Todo Cerrado	-0,7	°
-------------------	------	---

Señal Scrubber ●

Receta Actual: B-1371

Horno en Automático
EV CH4

Recetas
Dosificador
Standby
Bascula
Mantenimiento

COLOUR CERAMIC INDUSTRIES

DIRECT FLAME STAIN CALCINATION

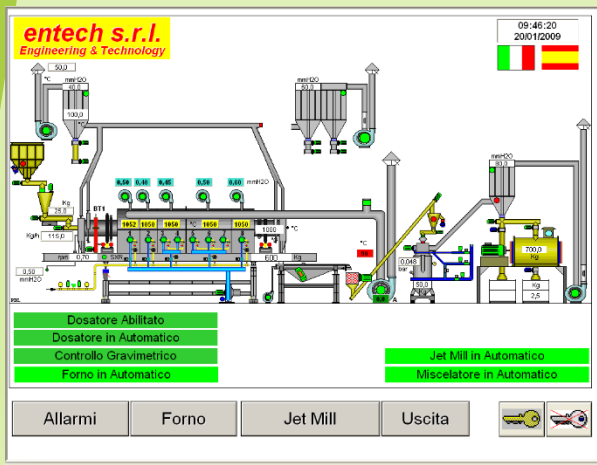
COMPARISON BETWEEN ROTARY KILN AND STATIC KILN		ROTARY KILN			STATIC KILN		
		LINEA CALCINAZIONE con forno DIRETTO 1100x8000 BLU			NR.2 MUFFOLE 6 M3 NR.2 MUFFOLE 4 M3		
DESCRIPTIONS	UNIT	UNIT		RMB/€		UNIT	RMB/€
INVESTMENT	RMB	2.517.310	380.000,00 €	6,6245		3.312.250	500.000,00 €
AMORTIZATION	YEAR	10				10	
WORKING DAY FOR YEAR	DAY	242				242	
WORKING HOURS FOR DAY	HOURS	24				24	
WORKING DAY FOR MONTH	DAY	22				22	
WORKING MAN	NR.	1				8	
WORKING DAY	NR/YEAR	11				11	
COST OF WORKING MAN	RMB/DAY	120	400,00 €	6,6245		120	400,00 €
PRODUCITON HOUR	KG/H	200				200	
COST KW	RMB/KW	0,99368	0,15 €	6,6245		0,99368	0,15 €
COST CH4	RMB/KW	3,97470	0,60 €	6,6245		3,97470	0,60 €
COST O2	RMB/KW	0,92743	0,14 €	6,6245		0,92743	0,14 €
COST REFRACTORY CONTAINER	RMB/KW	4,63715	0,70 €	6,6245		4,63715	0,70 €
ANNUAL MAINTENANCE	RMB/YEAR	125866	19000			165613	35000
ANNUAL PRODUCTION OXIDE	KG / YEAR	1161600	1161600			1161600	1161600
INSTALLED KW	KW/H	15				40	
INSTALLED CH4	CH4/H	30				50	
INSTALLED O2	O2/H	60				0	
REFRACTORY CONTAINER	NR.	0				800	
COST		RMB	EURO			RMB	EURO
INCIDENCE OF DEPRECIATION	RMB	0,21671	0,03271			0,28515	0,04304
INCIDENCE WORKING MAN	RMB	0,02509	0,00379			0,20074	0,03030
INCIDENCE COST KW	RMB	0,07453	0,01125			0,19874	0,03000
INCIDENCE COST CH4	RMB	0,59621	0,09000			0,99368	0,15000
INCIDENCE COST O2	RMB	0,27823	0,04200			0,00000	0,00000
INCIDENCE REFRACTORY CONTAINER	RMB	0,00000	0,00000			0,35542	0,05365
INCIDENCE MAINTENANCE	RMB	0,10836	0,01636			0,14257	0,02152
		RMB	EURO			RMB	EURO
COST FOR KG		1,29912	0,19611	- 0,88		2,17629	0,32852
COST FOR TON		1299,11829	196,10813	- 877,18		2176,29479	328,52212
				RMB			EURO
DIFFERENCE FOR YEAR		1.509.055,80	227.799,20	- 1.018.928,23		2.527.984,03	381.611,30
RETURN YEAR							-2,47054692

DIRECT FLAME STAIN CALCINATION

[illegible]

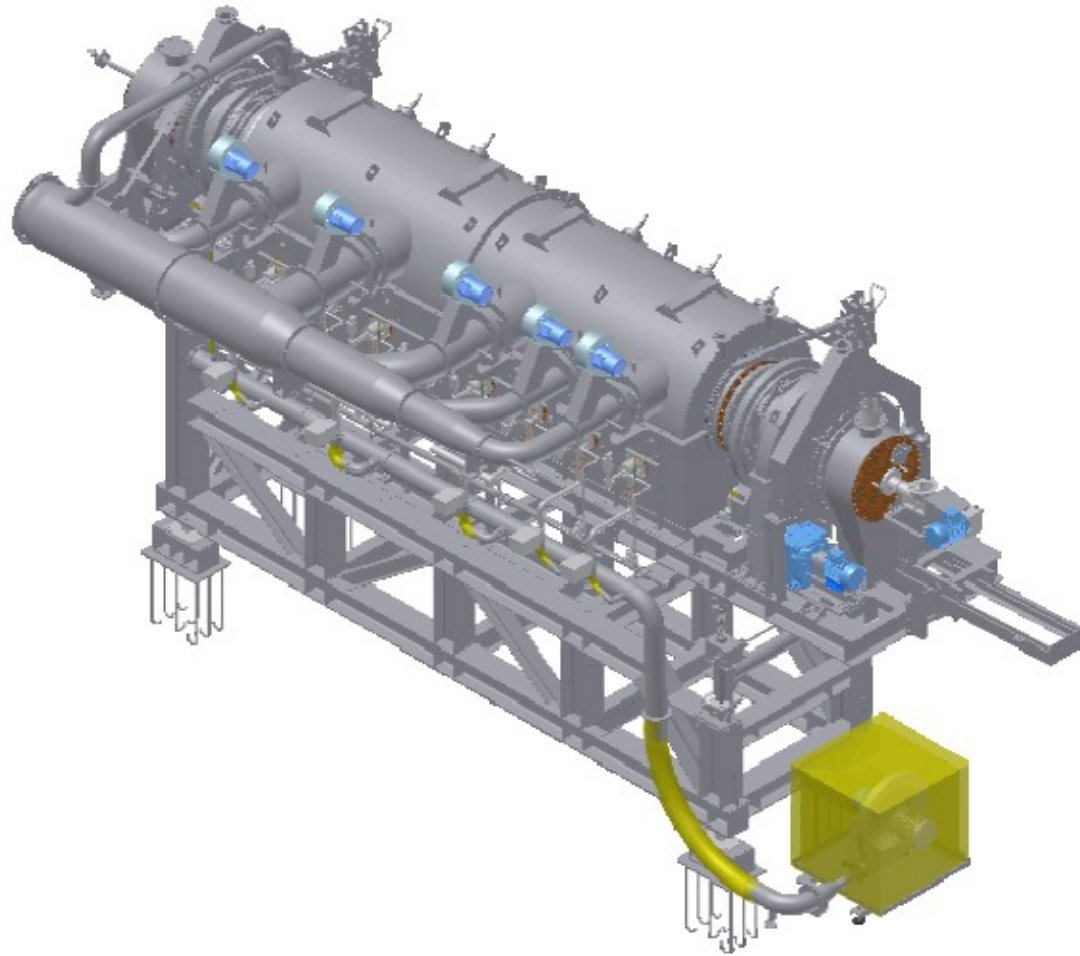
COLOUR CERAMIC INDUSTRIES

INDIRECT FLAME STAIN CALCINATION



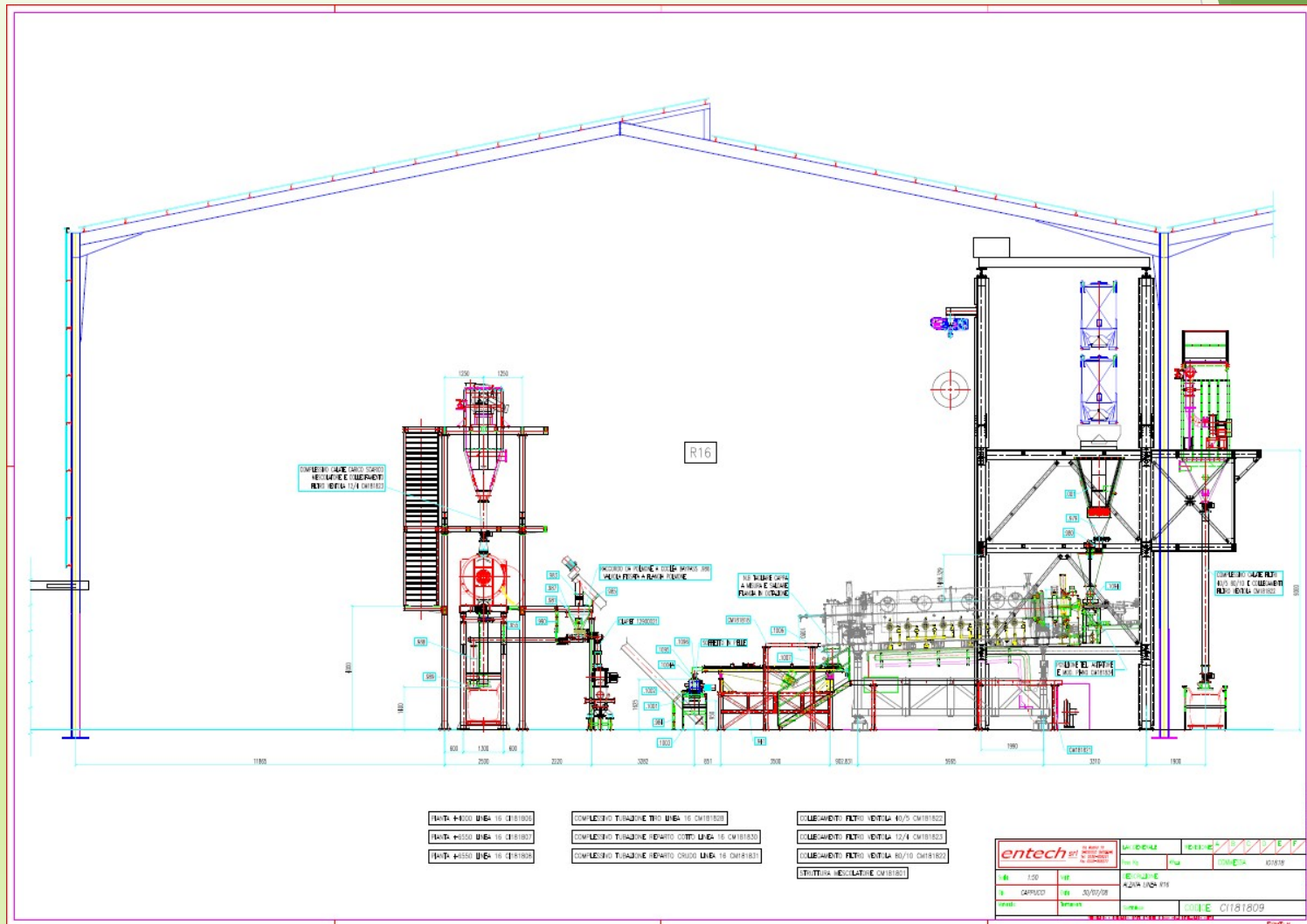
COLOUR CERAMIC INDUSTRIES

INDIRECT FLAME STAIN CALCINATION

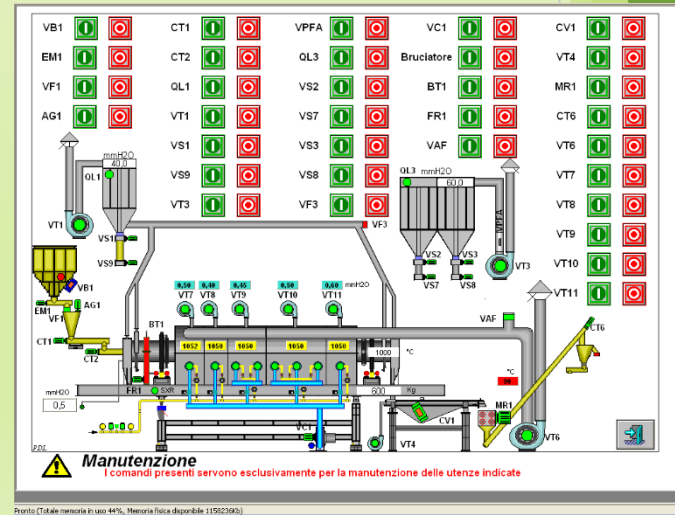
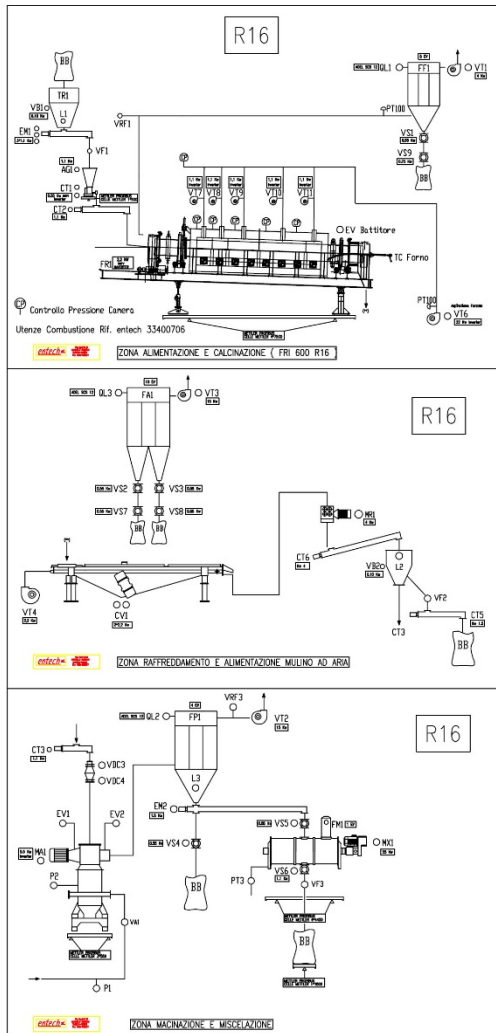


COLOUR CERAMIC INDUSTRIES

INDIRECT FLAME STAIN CALCINATION



INDIRECT FLAME STAIN CALCINATION



INDIRECT FLAME STAIN CALCINATION

[illegible]

entech srl

Engineering & Technology

