

enttech srl

Engineering & Technology

CAADSYSTEM

Ptda. Sol de L'Horta, s/n

12110-L'ALCORA – CASTELLÓN – SPAIN

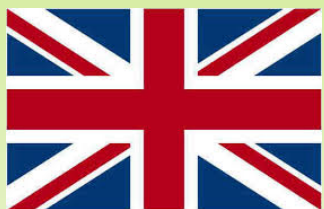
TEL. +34 964 361592 - MÓVIL +34 600 592469

Entech was founded in 1997 with its Headquarter in Sassuolo (MODENA), where the main Ceramic Cluster in Italy is located and it started to develop its Technology in Raw-Material and Granules process, mainly operating in the Ceramic field .

In the years it began expanding its activity in others sectors such as Mining, Cement, Adhesive, Detergents and Glass.

The constant development of the technology, the considerable quality level of the Machinery, the flexibility to the Customer needs, the consolidated experience, the different application and different typology of plants combined with the unceasing research of the process optimization , make ENTECH one of the most expert and competitive Company operating in the market nowadays.

One Team of expert engineers develops the projects , starting from the the Lay-out study and its relative definition ,they analyze the different process steps and then they provide with the installation and the final start-up of one single Machinery or very complex Systems .

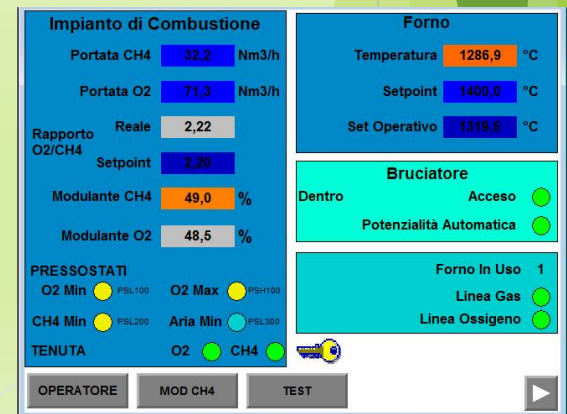
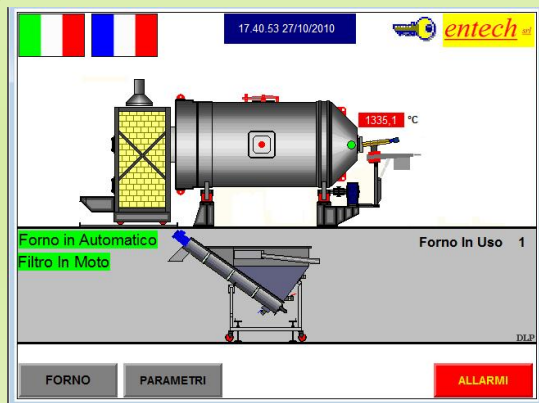


ENTECH SRL
VIA MADRID, 10
41049-SASSUOLO – MODENA - ITALY
TEL. +39 0536 808221 - FAX. +39 0536 808277
Web www.entech.it – Email entech@entech.it



COLOUR CERAMIC INDUSTRIES

DISCONTINUOUS FRIT MELTING



COLOUR CERAMIC INDUSTRIES

DISCONTINUOUS FRIT MELTING



[illegible]

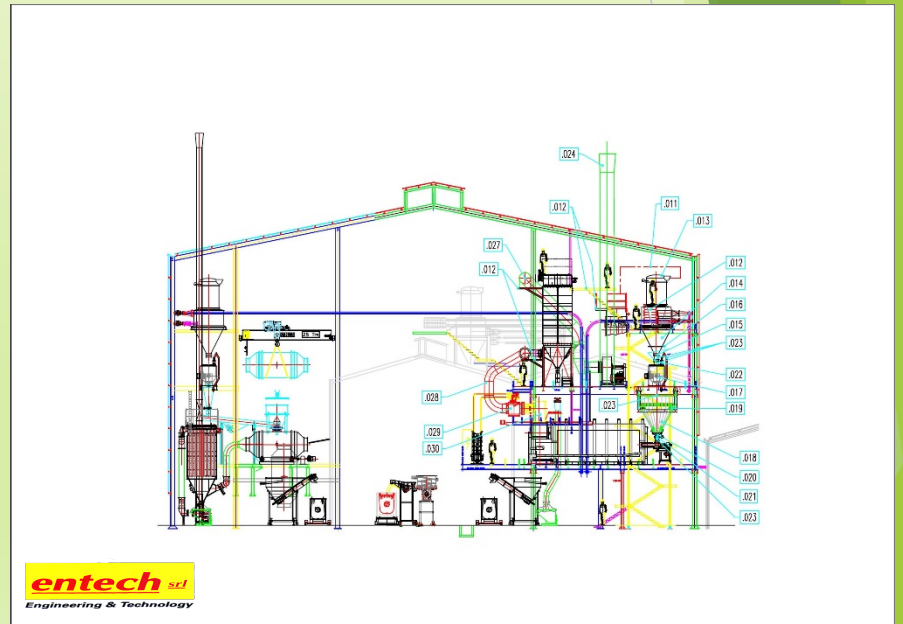
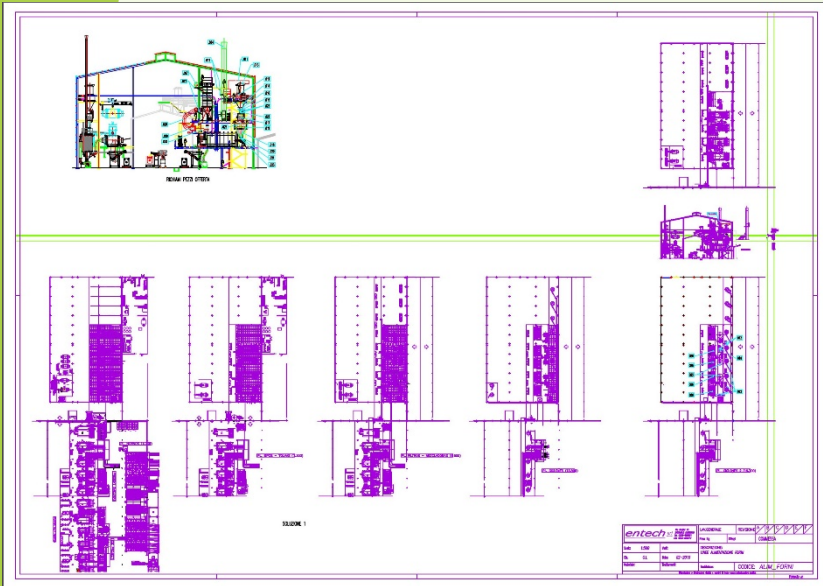
TILE CERAMIC FIELD

CONTINUOUS FRIT MELTING



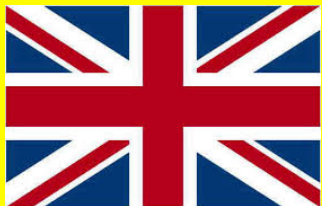
TILE CERAMIC FIELD

CONTINUOUS FRIT MELTING



entech srl

Engineering & Technology



ENTECH SRL
VIA MADRID, 10
41049-SASSUOLO – MODENA - ITALY
TEL. +39 0536 808221 - FAX. +39 0536 808277
Web www.entech.it – Email entech@entech.it

